

Art. V 450 FONDO + 2 pannelli mobili



ARMADI Attrezzati V 450

- I** Robusta struttura verniciata con polvere epossidica Grigio RAL 7038. L'armadio è dotato di due pannelli fissi affiancati sul fondo e di due pannelli scorrevoli su cuscinetti a sfera. Fornito smontato.
- GB** Sturdy cabinets, powder coated grey RAL 7038, supplied in kit form. These cabinets contains two fixed rear panels sitting adjacent to each other behind two rows of ball bearing mounted sliding panels.
- F** Armoire solide, avec 2 panneaux fixes placées l'un à côté de l'autre sur le dos et 2 panneaux coulissants sur roulement à billes. Structure robuste, peinte avec poudre époxyde gris RAL 7038. L'armoire est fournie démontée.
- D** Robuster Schrank aus Stahlblech, pulverbeschichtet, grau RAL 7038. Besteht aus zwei feststehenden Rückwänden, sowie aus zwei auf Kugellager laufenden, verschiebbaren Einsatzpaneelen. Wird zerlegt geliefert.
- E** Solido armario dotato de 2 paneles firmes aproximados en el dorso y equipados de 2 paneles corredizos sobre cojinetes de bolas. Lo armario es barnizado con polvos epoxidicos Gris RAL 7038. L'armario es consignado desmontado.

- I** PORTATA SINGOLO PANNELLO: KG 150
- GB** CAPACITY OF EACH PANEL: KG 150
- F** PORTÉE DE CHAQUE PANNEAU: KG 150
- D** TRAGFÄHIGKEIT JE SCHIEBEWAND: KG 150
- E** CAPACIDAD CADA PANEL: KG 150

Allestimento ARMADI

Art. **V 450 FONDO**
+ 2 pannelli mobili

V 450 STANDARD

Totale 255 cassette

FONDO:

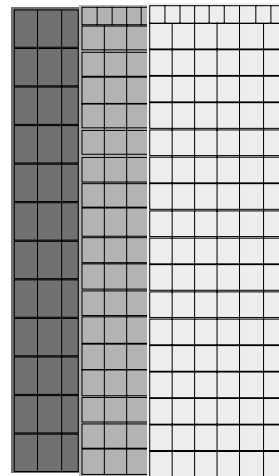
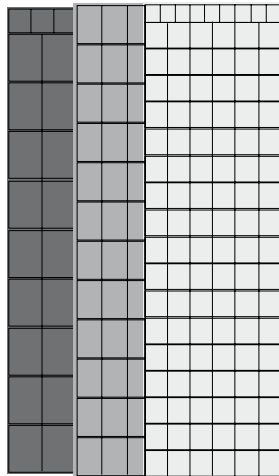
2 FOX 102 = 12 cassette
18 FOX 104 = 72 cassette

1° PANNELLO:

12 FOX 103 = 60 cassette

2° PANNELLO:

1 FOX 101 = 9 cassette
17 FOX 102 = 102 cassette



V 450 - 1V

Totale 342 cassette

FONDO:

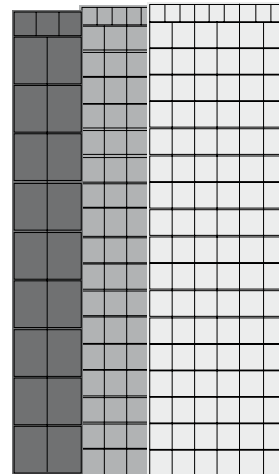
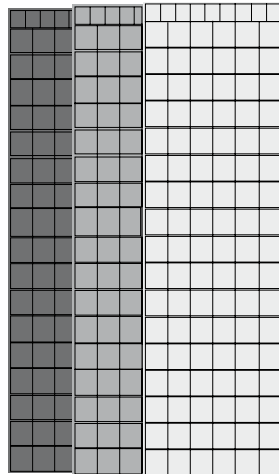
24 FOX 103 = 120 cassette

1° PANNELLO:

1 FOX 101 = 9 cassette
17 FOX 102 = 102 cassette

2° PANNELLO:

1 FOX 101 = 9 cassette
17 FOX 102 = 102 cassette



V 450 - 2V

Totale 444 cassette

FONDO:

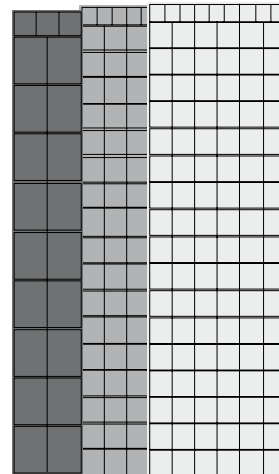
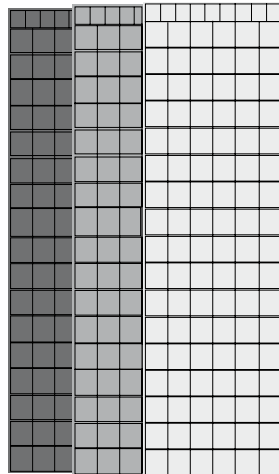
2 FOX 101 = 18 cassette
34 FOX 102 = 204 cassette

1° PANNELLO:

1 FOX 101 = 9 cassette
17 FOX 102 = 102 cassette

2° PANNELLO:

1 FOX 101 = 9 cassette
17 FOX 102 = 102 cassette



V 450 - 3V

Totale 306 cassette

FONDO:

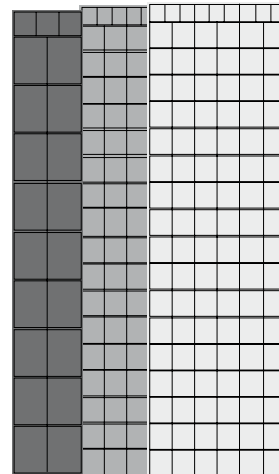
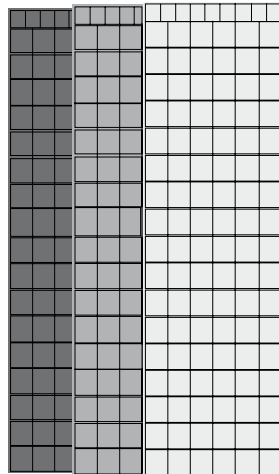
2 FOX 102 = 12 cassette
18 FOX 104 = 72 cassette

1° PANNELLO:

1 FOX 101 = 9 cassette
17 FOX 102 = 102 cassette

2° PANNELLO:

1 FOX 101 = 9 cassette
17 FOX 102 = 102 cassette



V 450 - 4V

Totale 237 cassette

FONDO:

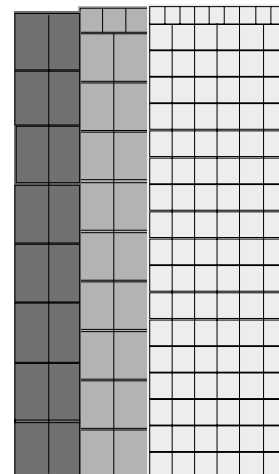
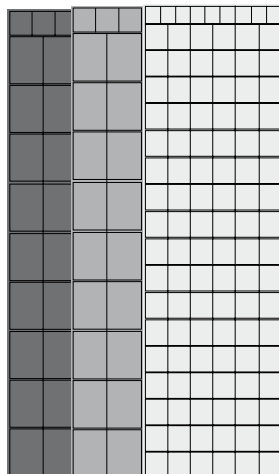
2 FOX 102 = 12 cassette
18 FOX 104 = 72 cassette

1° PANNELLO:

1 FOX 102 = 6 cassette
9 FOX 104 = 36 cassette

2° PANNELLO:

1 FOX 101 = 9 cassette
17 FOX 102 = 102 cassette



V 450 - 5V

Totale 201 cassette

FONDO:

16 FOX 105 = 48 cassette

1° PANNELLO:

1 FOX 102 = 6 cassette
9 FOX 104 = 36 cassette

2° PANNELLO:

1 FOX 101 = 9 cassette
17 FOX 102 = 102 cassette

